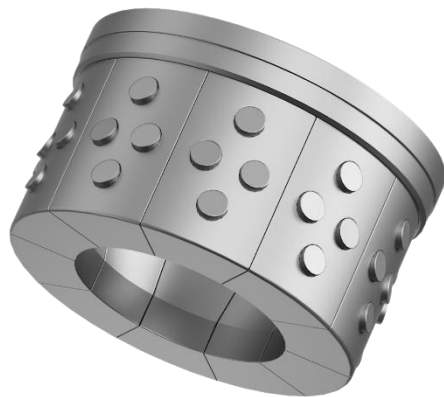


Wizard ZERO Large-Bore Dissolvable Collet

Majority portion of dissolvable frac plugs on the market are still made up of many complex components; limiting the inner diameter and fluid contact area, which compromise dissolvability. Therefore, the first generation of dissolvable plugs still faces big challenge, and requires a “clean-out run” before producing the well. To truly overcome these inevitable challenges associated with traditional dissolvables, Vertechs introduced a new generation intervention-less dissolvable collet, for both high and low-temperature applications (100-350°F), 10,000 psi pressure rating, with a length of less than 2.5". Once stimulation is completed, the well can be flowed back immediately through the extremely large ID of the tool, preventing downhole debris or sand from packing up, eliminating the need of clean out runs, and saving substantially on intervention cost.

FEATURES

- Impact resistance, anti-preset, zero packing element, no speed limit
- 10,000 psi pressure rating, customized for both high and low-temperature applications
- ID sealing component dissolves quickly, granting ultra-large flow back channel
- Collet dissolves within 3-7 days



SPECIFICATIONS

| Casing Size in.[mm] | Casing Weight (lb/ft) | Casing ID in.[mm] | Collet OD in.[mm] | Collet ID in.[mm] | Length in.[mm] | Pressure Rating psi.[MPa] |
|------------------------|--------------------------|----------------------|----------------------|----------------------|-------------------|---------------------------------|
|------------------------|--------------------------|----------------------|----------------------|----------------------|-------------------|---------------------------------|

| | | | | | | |
|------|-------------|--|----------------|-----------------|------------------|----------------|
| 5.5" | 17.0 - 20.0 | 4.780 - 4.892 [121.36 - 124.26] | 4.488 [114] | 2.776 [70.5] | 4.606 [117] | 10,000 [70] |
| | 23.0 | 4.670 [118.62] | 4.252 [108] | 2.520 [64] | 4.114 [104.5] | |
| | 26.8 | 4.500 [114.3] | 4.094 [104] | 2.362 [60] | 4.114 [104.5] | |

Contact Us

engineering@vertechs.com

Chengdu | Dammam | Houston | Calgary | Hong Kong

Disclaimer :

This document and any files transmitted with it are for use between Vertechs Group and external partners related to the Group's business. Unauthorized use is prohibited, and the dissemination, copying, or distribution of this document and its contents is strictly forbidden until the information becomes public or loses its commercial value. Violators will be held legally responsible.